

# FSC™ Chain of Custody Expert Course

Online Course – Live Sessions | 22 November – 26 November 2021 (GMT+8)



## Learn to read the mind of your FSC auditor - or become one yourself!

Our intensive FSC Expert trainings will equip you with the mindset and knowledge of an FSC auditor. Join our ASI accredited FSC CoC online course to fulfill formal FSC Chain of Custody auditor training requirements whilst gaining useful insight into the FSC CoC system!

This FSC CoC course consists of an **online content @Training Hub**, followed by **a 4-day intensive live sessions training**, covering the **FSC standards** and **systems** for **Chain of Custody and Controlled Wood certification**.

This FSC CoC course is conducted in **English**. Please ensure that your language skills will allow you to fully engage in presentations, group exercises, discussions and examinations.

## FSC requirements for remote auditor training

Based on the derogation FSC-DER-2020-04 published on 23 April 2020, FSC currently allows to replace in-person auditor trainings with remote courses.

Preferred by Nature's online FSC CoC course is a customised auditor training to meet the training demand during COVID-19 pandemic, considering the travel and safety restrictions, without reducing the quality of our regular in-person auditor trainings held worldwide.

The content and duration of the training will meet all the standard FSC requirements for auditor trainings and at the same time be adjusted to be presented and acquired via different virtual tools and training methods. To enable everybody to participate actively in the live sessions and group work, the maximum number of places is 12.

## Obtaining an FSC Auditor Training Certificate

Conditions for successful completion of the course are following\*:

- Completion of online modules at Preferred by Nature Training Hub
- Completion of self-study webinars at Preferred by Nature Training Hub
- Active attendance at live training sessions
- Successful completion of exam

Students must be present in 95% of live training sessions, actively engaged throughout the whole course and have participated in individual and group exercises.

*\*For the participants who are not looking to acquire the auditor qualification the exam and online modules' completion is voluntary. Regardless, we would highly recommend to complete the online part of the course beforehand as it will aid to a better understanding of content and overall learning experience at the live sessions.*

Read more here



# FSC™ Chain of Custody Expert Course

Online Course – Live Sessions | 22 November – 26 November 2021 (GMT+8)



## Trainers

### Malory Weston

Lead Auditor, Australia

Malory is the Manager of Preferred by Nature's (PbN) Oceania sub-region and has been working with PbN since 2015. She is a Senior FSC Chain of Custody Auditor, and Forest Management Auditor, as well as a PEFC Chain of Custody and LegalSource Auditor; and has carried out audits in various countries including India, Vietnam, Papua New Guinea, Philippines, New Zealand, Australia, Indonesia, Solomon Islands, Czech Republic, Lithuania and Malaysia. Malory also works for PbN as a technical editor. Prior to joining PbN, Malory worked in natural resource management for NGOs, government, and as an independent consultant; and taught NRM in universities in Australia.

### Huang Rui (Rick)

Forest Certification Specialist, China

Rick is responsible for providing FSC FM and CoC certification services in China, Taiwan, Hong Kong, Japan and Korea. He manages the forestry certification process for a subset of PbN clients and also provides PEFC, SBP, and Legal Source certification services in the East Asia region. He also works on projects that support legal timber trade. He has a bachelor of Forest Resource Conservation and Master of Forestry with Honors from the Northeast Forestry University. He has five years' experience in forestry, including two years of academic work in the field. Prior to joining PbN, Huang Rui worked as Forest Certification and Fair Wild Programme Manager at the International Cooperation Department of China Standard Conformity Assessment Co. Ltd.

## Participants' testimonial



“ The FSC CoC training course, helped me to understand the requirements of FSC CoC in full. Overall I am very satisfied, and am very confident that I shall bring the fruitfulness of training to my organisation. ”

**ARUN NETHRASIGAMANI**  
Group Quality Controller,  
Zeus Packaging Ltd, Ireland



“ The FSC CoC training was extremely helpful, well organized, and interesting. I highly recommend this class to anyone interested in FSC or FSC certified. ”

**JENNIFER FOREST**  
Internal auditor, Martco LLC,  
US



“ The course gave me a great insight in the FSC Chain of Custody. The trainees were well prepared and even though the material was detailed and needed all our attention, it was pass on to us in a easy and relaxed way. It was a very interesting course. ”

**HANS LINDEKILDE**  
Owner,  
[www.SCABylindekilde.dk](http://www.SCABylindekilde.dk), DK

## Why you should take this course?

- **Online modules for self-study** that you can complete at a time of your preference before or during the training days
- **4 live training sessions** (GMT+8) with our Expert trainers and fellow participants
- Spread out over consecutive days with mid-week break to offer more **flexibility**
- **Live group work** and presentation sessions
- **Online exam** you can take from home
- Electronic training materials for easy use
- A **certificate of completion or attendance** to prove your participation

# FSC™ Chain of Custody Expert Course

Online Course – Live Sessions | 22 November – 26 November 2021 (GMT+8)



## Self-study for Day 1

Introduction to Chain of Custody	19 min
FSC auditor qualifications and behaviour	52 min
Standard FSC-STD-40-004 – Management System	43 min
FSC Core Labour Requirements NEW!	16 min
FSC Chain of Custody Standards and Systems	31 min
Transfer system	19 min
Percentage system	22 min
Credit system	23 min
<b>Total duration</b>	<b>225 min/≈3.75 hours</b>

All self-study sessions can be completed individually on our [Training Hub](#)

## Day 1 | Monday, 22 November

9.15 – 9.30 AM	Check-in
9.30 – 10.15 AM	Introduction to Course & Exam -- Group
10.15 – 10.45 AM	Kick-off Exercise: Presentations -- Individual
10.45 – 11.00 AM	Break
11.00 – 11.45 AM	Online Modules Review -- Q&A
<b>11.45 – 12.15 AM</b>	<b>Exercise 1: Teamwork -- Group</b>
<b>12.15 – 1.15 AM</b>	<b>Exercise 2: Interviewing skills -- Group</b>
1.15 – 1.30 PM	Break
<b>1.30 – 2.30 PM</b>	<b>Exercise 3: Selecting appropriate CoC system -- Group</b>
2.30 – 3.00 PM <i>+15 mins flexibility</i>	Q&A and discussion session – Q&A

**Total**

**300 min/5 hours**

# FSC™ Chain of Custody Expert Course

Online Course – Live Sessions | 22 November – 26 November 2021 (GMT+8)



## Self-study for Day 2

FSC Product Groups	17 min
FSC Controlled Wood Standard FSC-STD-40-005 V3-1	33 min
Chain of Custody assessment process	22 min
<b>Total duration</b>	<b>72 min/1.2 hours</b>

All self-study sessions can be completed individually on our [Training Hub](#)



## Day 2 | Tuesday, 23 November

9.15 – 9.30 AM	Check-in
9.30 – 10.15 AM	Day 1 Recap & Day 2 Prep – Q&A
<b>10.15 – 11.00 AM</b>	<b>Exercise 4: FSC Product Groups -- Group</b>
11.00 – 11.15 AM	Break
<b>11.15 – 12.15 AM</b>	<b>Exercise 5: Risk Assessment for mixing -- Group</b>
12.15 – 12.30 AM	Break
12.30 – 1.30 PM	Exercise 6: Preparing an audit plan – Group
1.30 – 2.00 PM <i>+15 mins flexibility</i>	Q&A and discussion session – Q&A

**Total**

**240 min/4 hours**

# FSC™ Chain of Custody Expert Course

Online Course – Live Sessions | 22 November – 26 November 2021 (GMT+8)

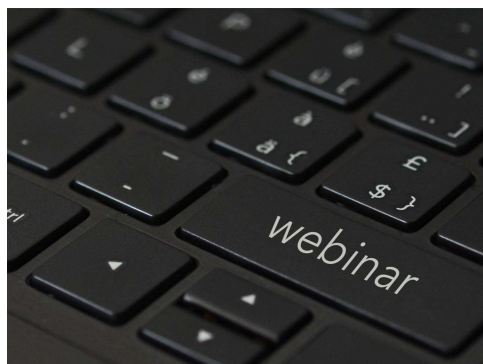


## Self-study for Day 3

Exam preparation & individual Q&A Throughout Training days

**Total duration** Individual

All self-study sessions can be completed individually on our [Training Hub](#)



## Day 3 | Thursday, 25 November

9.15 – 9.30 AM	Check-in
9.30 – 10.15 AM	Day 2 Recap & Day 3 Prep – Q&A
<b>10.15 – 11.45 AM</b>	<b>Exercise 7: Reviewing CoC and CW procedures -- Group</b>
11.45 – 12.00 AM	Break
<b>12.00 – 1.30 PM</b>	<b>Exercise 8: Evaluation of conformance -- Group</b>
1.30 – 1.45 PM	Break
1.45 – 2.45 PM <i>+15 mins flexibility</i>	Q&A and discussion session – Q&A
<b>2.45 – 3.45 PM</b>	<b>&lt;Homework&gt; Exercise 9: Preparation for closing meeting</b>
<b>Total</b>	<b>345 min/5.75 hours</b>

# FSC™ Chain of Custody Expert Course

Online Course – Live Sessions | 22 November – 26 November 2021 (GMT+8)

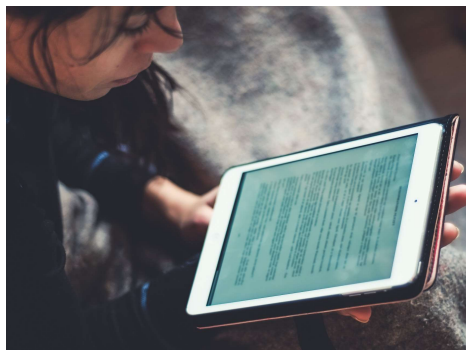
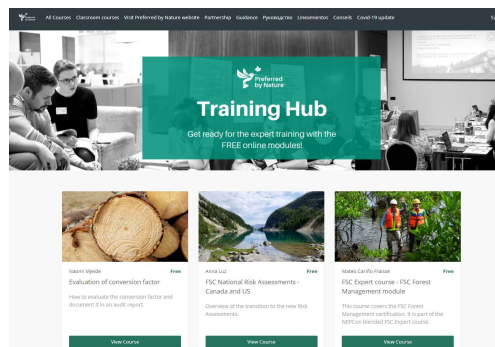


## Self-study for Day 4

Exam preparation & individual Q&A Throughout Training days

Total duration Individual

All self-study sessions can be completed individually on our [Training Hub](#)



## Day 4 | Friday, 26 November

9.15 – 9.30 AM	Check-in
9.30 – 10.15 AM	Day 1 Recap & Day 2 Prep – Q&A
<b>10.15 – 11.45 AM</b>	<b>Exercise 10: Conducting the closing meeting -- Group</b>
11.45 – 12.00 AM	Break
12.00 – 1.00 PM <i>+15 mins flexibility</i>	Q&A and discussion session, Exam recap, Closing
1.00 – 2.00 PM	Lunch / Exam preparation



Exam -- 150 min

Please note that participants must complete this individual exam online. Exam takers will be monitored throughout the exam.

Total

345 min/5.75 hours

*\*The agenda is subject to change. Trainers might adjust the topics and timeslots to better meet the needs of attendees and/or due to technical necessities. All modifications will be agreed upon jointly.*